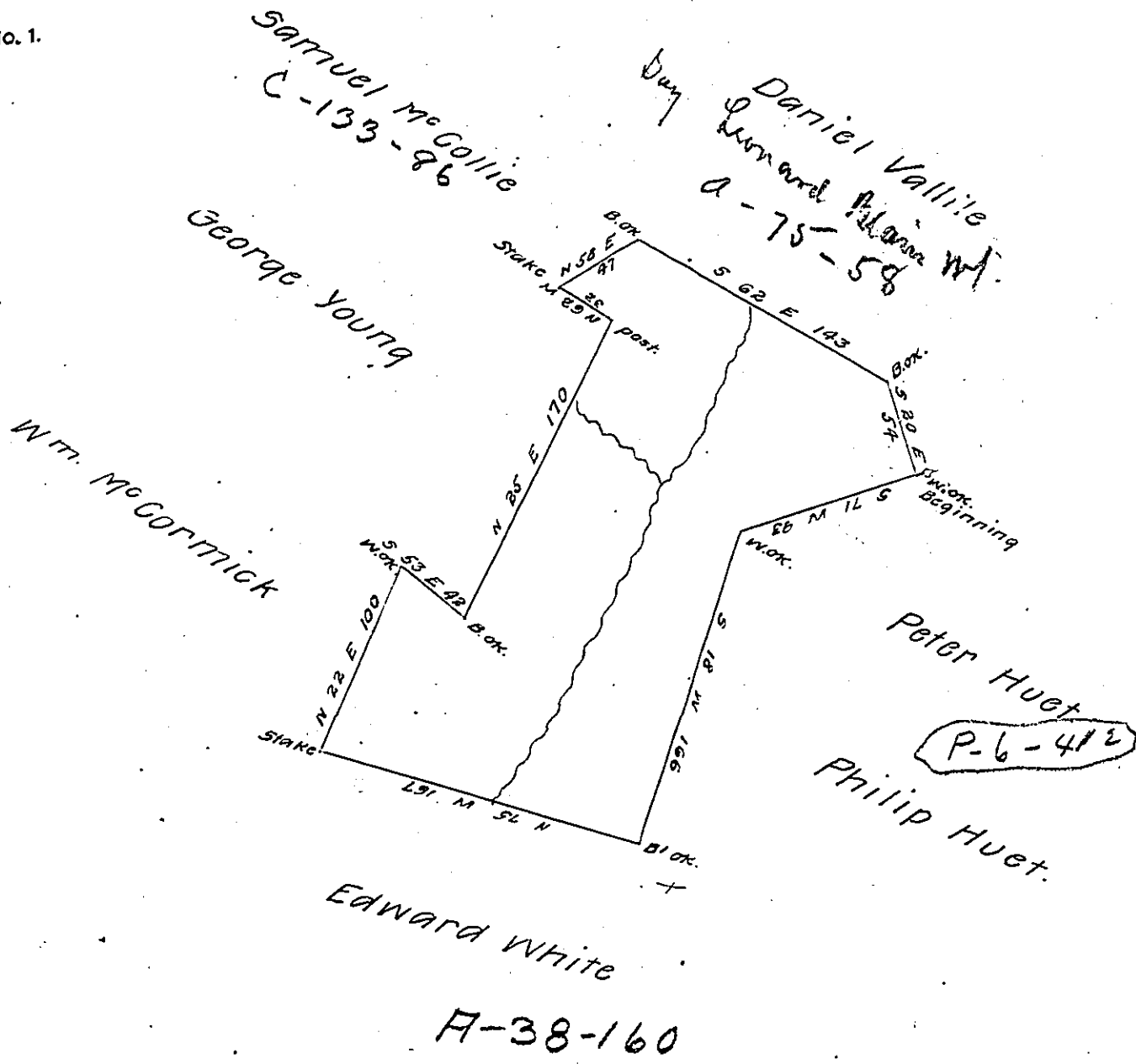


FORM No. 1.



the Above is the Draught of a Survey made July 5th 1790
 in pursuance of (obliterated) Wireman (obl.) 16th Oct-
 ober 1788, Situate on the Waters of ten mile Creek Call'd
 Exchange Containing 227 1/2 Acres with allowance &c.

Jn^o. Hoge D.S.

Daniel Broadhead Esq^r.

S. 6 1/2 State of Penns^l

IN TESTIMONY that the above is a copy of the original remaining on file in
 the Department of Internal Affairs of Pennsylvania, made
 conformably to an Act of Assembly approved the 16th day of
 February 1833, I have hereunto set my hand and caused
 the Seal of said Department to be affixed at Harrisburg,
 this eighth day of June 1907.

Henry Houch
 Secretary of Internal Affairs.